

## Air/Gas and Vacuum - No Problem

### MR-185US, -200US, -300 Liquid-Ring Pump

#### Application

MR is a liquid-ring pump specially designed for pumping liquids containing air or gas.

The pump is for use in food, chemical, pharmaceutical and similar industries.

The pump is mainly used for CIP-return application.

#### Standard design

All product wetted parts, i.e. pump casing, casing cover and impeller are made of stainless steel AISI 316L. Elastomers are made of EPDM rubber.

Cap nuts and legs, leg brackets are made of stainless steel AISI 304.

MR-185US and 200US: Adaptor is in cast iron which is zinc coated and laquered making it highly corrosion resistant.

#### Shaft seal

On 185US and 200US, the mechanical single seals have stationary seal rings of stainless steel AISI 329 and rotating seal rings of carbon.

The MR-300 has mechanical single seal with stationary seal rings of carbon and rotating seal rings of stainless steel AISI 329.

#### Technical data

Max. inlet pressure: 60 psi (4 bar).  
Temperature range 14° F to 284° F (EPDM).

#### Motor

Standard C-faced, foot mounted motor according to NEMA standard. 1750 RPM. Premium efficiency, Class F. Special D-Flange motor required for MR-300 pump only.

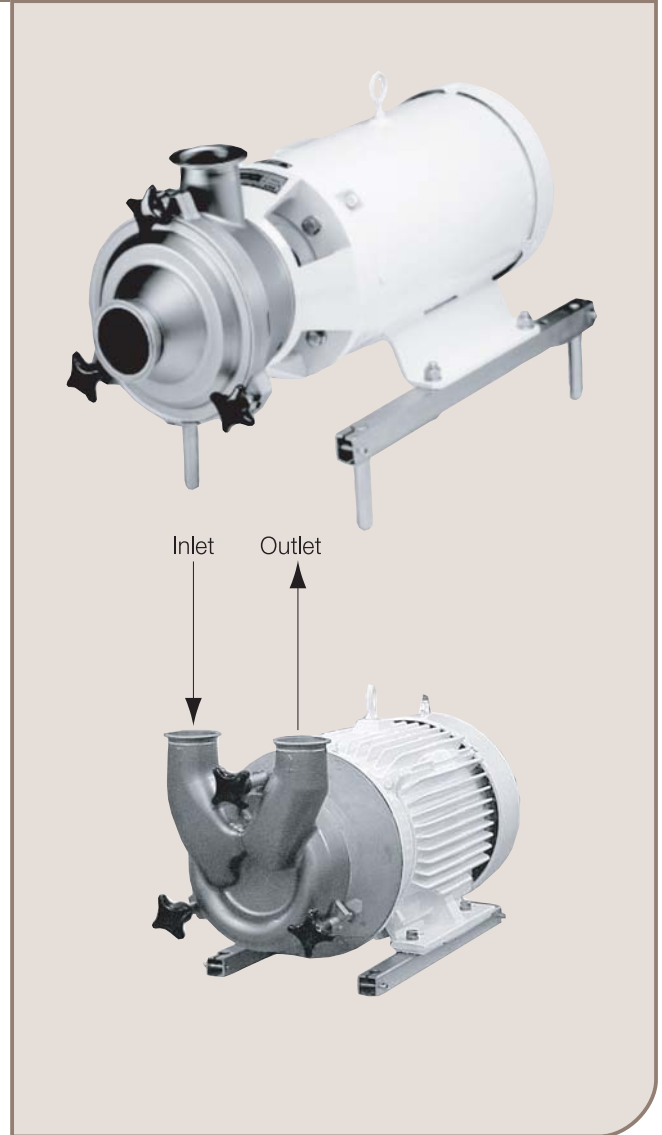
#### Voltage and frequency

3~, 60 Hz, 230/460V

#### Motor sizes

##### Motor Sizes

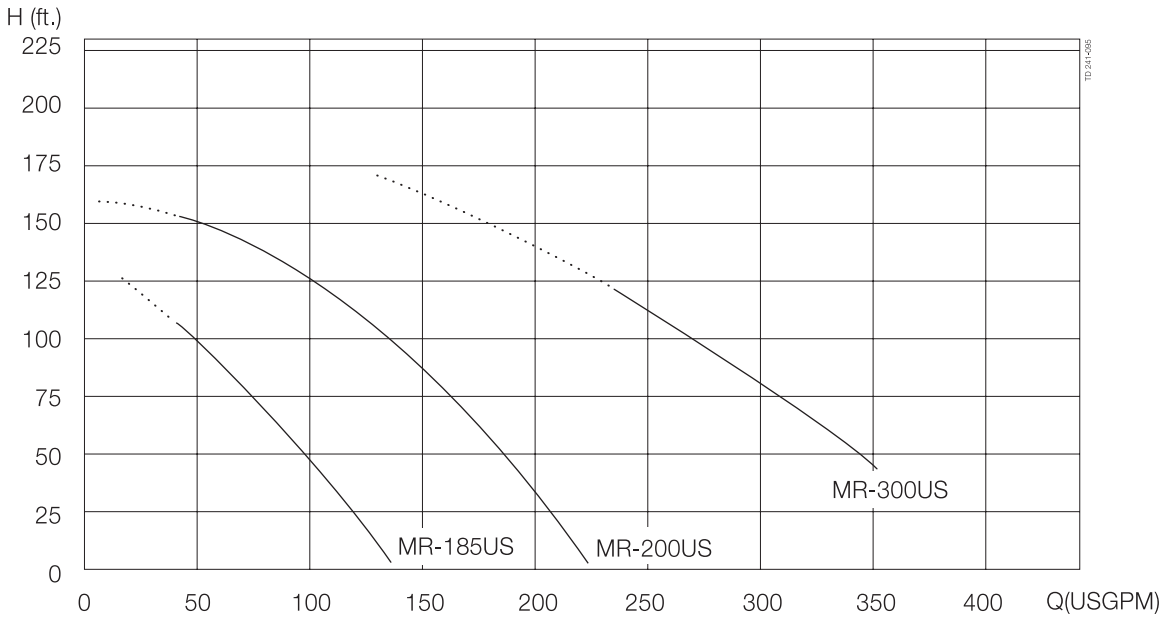
185	60Hz:	7.5 Hp - 1750 RPM
200	60Hz:	15 Hp - 1750 RPM
300	60Hz:	25, 30 Hp - 1750 RPM



MR-185US Pump

MR-300 Pump

**Volumetric flow MR-185US, -200US and -300**



**Options  
Equipment**

- Other voltage and frequency.
- X proof mtrs
- Adaptor in stainless steel AISI 304 (MR-185US and MR-200US only)

**Material grades**

- Product wetted seals of Nitrile (NBR) or Fluorinated rubber (FPM)
- Stationary seal ring with sealing surface of Silicon Carbide (MR-185US and MR-200US only)
- Rotating seal ring of Silicon Carbide (MR-185US and MR-200US only)

**Ordering**

Please state the following when ordering:

- Pump type.
- Voltage and frequency.
- Connections.
- Flow rate, pressure and temperature.
- Density and viscosity of product.
- Options.

**Connections (in)**

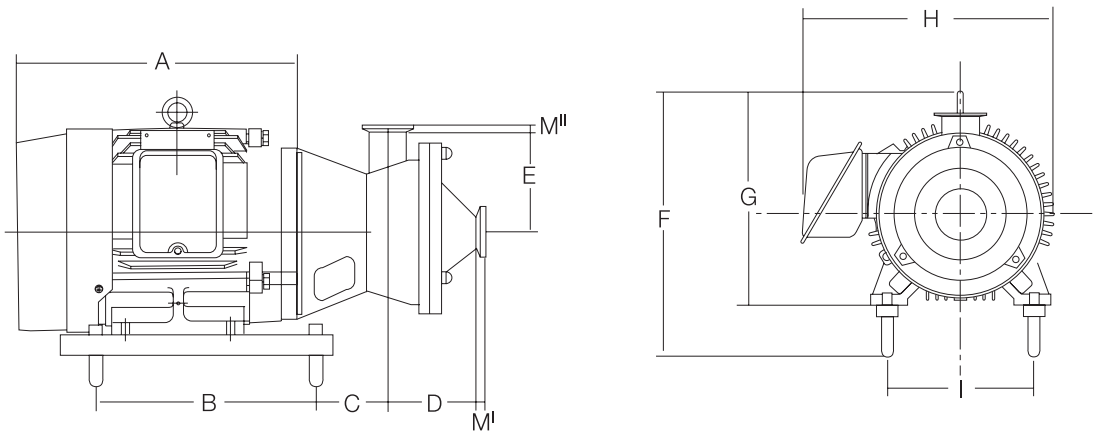
MR-185US and MR-200US: Inlet and outlet: 3"

Dim.	Tri-clamp®	BS male
M <sup>i</sup>	0.83	0.87
M <sup>ii</sup>	0.47	0.87

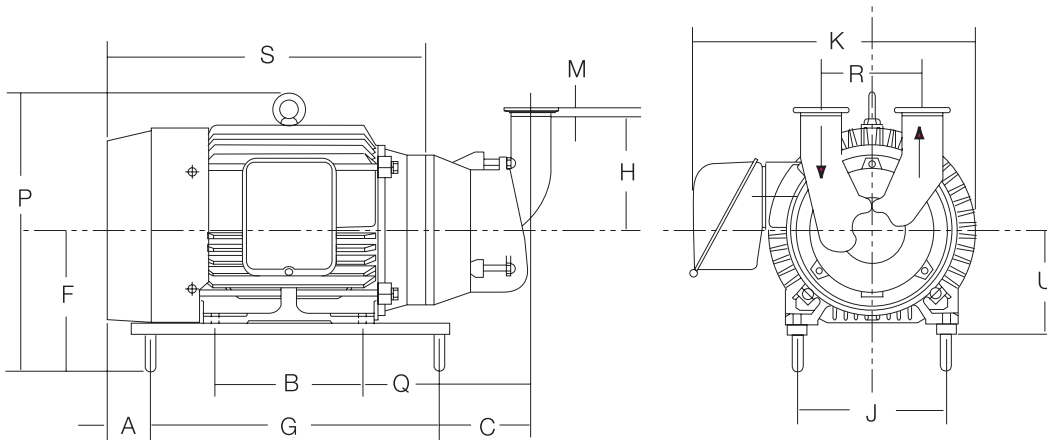
MR-300: Inlet and outlet: 3"

Dim.	Tri-clamp®	BS male
M	0.83	0.87

**Dimensions (in)**  
185US/-200US



**MR-300**



**Dimensions (in)**  
MR-185US/200US

Size	7.5Hp	15Hp
A	14.55	18.68
B	14.17	19.02
C	4.22	4.22
D	3.81	3.81
E	5.51	5.51
F	15.97	18.01
G	12.47	14.51
H	13.50	17.87
I	8.50	10.00
Weight (lb)	574.00	589.00

**Note!** Data for pump with legs and Reliance brand motor

**MR-300**

Size	25Hp	30Hp
A	4.87	4.87
B	9.50	11.00
C	7.00	7.00
F minimum	9.00	9.00
F maximum	12.00	12.00
G	19.00	19.00
H	8.07	8.07
J	11.00	11.00
K	21.01	21.01
P minimum	19.75	19.75
P maximum	19.75	19.75
Q	13.00	13.00
R	7.48	7.48
S	23.14	23.25
U	8.38	8.38
Weight (lb)	574.00	589.00

**Note!** Data for pump with legs and Reliance brand motor