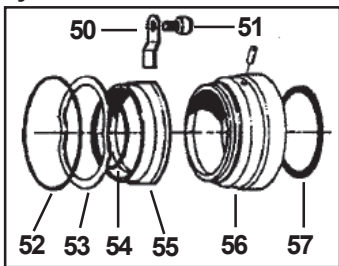
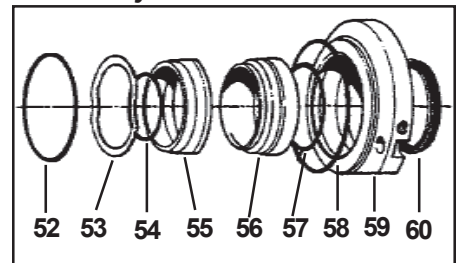


Hyclean™ Seal



Flushed Hyclean Seal



Positive Displacement Pump 722/732 GHPD (Vertical)

| Pos. | Qty. | Description | 722/732 Part No. |
|------|------|-----------------------------------|---------------------|
| 1 | 1 | Gear case | 31497-5220-237 |
| 2 | 2 | Dowel | 5170-010 |
| 3 | 4 | Stud, RC-gear case | 6350-138 |
| 4 | 4 | Nut, RC-gear case | 5330-001 |
| 4a | 4 | Washer | 6400-038 |
| 5 | 1 | Gear case cover | 31497-5120-060 |
| 6 | 6 | Screw | 5990-030 |
| 7 | 1 | Lip seal, Nitrile | 5310-012 |
| | 1 | Lip seal, FPM | 5310-082 |
| 8 | 1 | Shim set, SS | 6150-157 |
| | 1 | Shim set, Plastic | 6150-158 |
| 8a | 2 | Shim retainer | 6150-275 |
| 8b | 4 | Screws | 6000-010 |
| 9 | 1 | Rotor case, 722 | 9217-1491 |
| | 1 | Rotor case, 732 | 9218-1501 |
| 10 | 8 | Stud front cover | 6350-095 |
| 11 | 1 | Front cover O-ring, Nitrile | 883-1550-273 |
| | 1 | Front cover O-ring, FPM | 883-1551-273 |
| | 1 | Front cover O-ring, PTFE | 1552-273 |
| | 1 | Front cover O-ring, EPDM | 883-1555-273 |
| 12 | 1 | Front cover | 31497-5130-315 |
| 13 | 8 | Front cover nut | 5340-047 |
| 14 | 2 | Retainer (front bearing) | 5560-036 |
| 15a | 4 | Retainer screw | 5990-030 |
| 15b | 2 | Screw (Long) | 5990-017 |
| 16 | 2 | Lip seal, Nitrile | 5310-043 |
| | 2 | Lip seal, FPM | 5310-076 |
| 18 | 2 | Rotor O-ring, Nitrile | 883-1550-135 |
| | 2 | Rotor O-ring, FPM | 883-1551-135 |
| | 2 | Rotor O-ring, PTFE | 1552-135 |
| | 2 | Rotor O-ring, EPDM | 883-1555-135 |
| 20 | 2 | Rotor nut O-ring, Nitrile | 883-1550-133 |
| | 2 | Rotor nut O-ring, FPM | 883-1551-133 |
| | 2 | Rotor nut O-ring, PTFE | 1552-133 |
| | 2 | Rotor nut O-ring, EPDM | 883-1555-133 |
| 21 | 1 | Rotor nut, 722 R.H. | 31497-5900-169 |
| 22 | 1 | Rotor nut, 722 L.H. | 31497-5900-189 |
| 21 | 1 | Rotor nut, 732 R.H. | 31497-5900-170 |
| 22 | 1 | Rotor nut, 732 L.H. | 31497-5900-190 |
| 23 | 1 | Drive key | 5270-013 |
| 24 | 1 | Drive shaft, SS | 31497-6110-659 |
| | 1 | Drive shaft, Duplex | 31497-6110-663 |
| 25 | 1 | Lay shaft, SS | 31497-6100-667 |
| | 1 | Lay shaft, Duplex | 31497-6100-671 |
| 26 | 4 | Rear bearing | 5080-015 |
| 27 | 1 | Shaft spacer | 31497-5670-067 |
| 28 | 2 | Rear bearing spacer | 5670-049 |
| 29 | 2 | Front bearing spacer | 5670-051 |
| 30 | 2 | Rear nut | 5340-035 |
| 31 | 4 | Front bearing | 5080-017 |
| 34 | 2 | Front nut | 5340-045 |
| 36 | 2 | Timing gear, hard | 5210-034 |
| 37 | 2 | Torque locking assembly | 5615-005 |
| 45 | 1 | Drain plug | 1660-008 |
| 46 | 1 | Sight level glass | 5480-001 |
| 47 | 1 | Filler plug | 31491-0052-1 |
| | 1 | Filler plug washer | 31499-5916-1 |

Recommended Spare Parts: Pos. 7, 11, 16, 18, 20, 26, 31 and shaft seals

| Pos. | Qty. | Description | 722 Part No. | 732 Part No. |
|----------------------------|------|-------------------------------|-----------------|-----------------|
| Trilobe Rotors (SS) | | | | |
| 17 | 2 | Class "A" | 31497-5740-1161 | 31497-5740-1681 |
| | 2 | Class "B" | 31497-5740-1162 | 31497-5740-1682 |
| | 2 | Class "C" | 96300-4805-7 | 96300-4806-0 |
| | 2 | High pressure class "A" | 31497-5740-1164 | 31497-5740-1684 |
| | 2 | High pressure class "B" | 31497-5740-1165 | 31497-5740-1685 |
| | 2 | High pressure class "C" | 96300-4805-9 | 96300-4806-2 |

Bilobe rotors (SS) (Bilobe rotors must be ordered in pairs)

| | | | | |
|----|---|-------------------------------|--------------|--------------|
| 17 | 1 | Class "A" | 96300-9061-5 | 96300-9062-1 |
| | 1 | Class "B" | 96300-9061-6 | 96300-9062-2 |
| | 1 | Class "C" | 96300-9061-7 | 96300-9062-3 |
| | 1 | High pressure class "A" | 96300-9061-8 | 96300-9062-4 |
| | 1 | High pressure class "B" | 96300-9061-9 | 96300-9062-5 |
| | 1 | High pressure class "C" | 96300-9062-0 | 96300-9062-6 |

| Pos. | Qty. | Description | 722/732 Part No. |
|------|------|-------------|---------------------|
|------|------|-------------|---------------------|

Hyclean™ Seal

| | | | |
|------------|---|--|----------------|
| 50 | 1 | Clip | 31495-5087-053 |
| 51 | 1 | Screw | 5990-064 |
| 52Δ | 1 | Rotor case O-ring, EPDM | 8831-5553-35 |
| | 1 | Rotor case O-ring, Nitrile | 31497-5001-1 |
| | 1 | Rotor case O-ring, FPM | 883-1551-335 |
| 53Δ | 1 | Wave spring | 31497-0508-1 |
| 54Δ | 1 | Shaft O-ring, EPDM | 883-1555-137 |
| | 1 | Shaft O-ring, Nitrile | 883-1550-137 |
| | 1 | Shaft O-ring, FPM | 883-1551-137 |
| 55Δ | 1 | Stationary face, Carbon | 31497-0501-2 |
| | 1 | Stationary face, Silicon Carbide | 31497-0501-3 |
| 56Δ | 1 | Rotary face, SS | 31497-0506-1 |
| | 1 | Rotary face, Silicon Carbide | 31497-0506-3 |
| 57Δ | 1 | Washer, Nitrile | 6400-072 |
| | 1 | Washer, FPM | 6400-076 |
| 58 | 2 | Flush housing O-ring, EPDM | 5380-409 |
| | 2 | Flush housing O-ring, Nitrile | 5380-406 |
| | 2 | Flush housing O-ring, FPM | 5380-407 |
| 59 | 2 | Flush housing | 3149-7526-5391 |
| 60 | 2 | Lip seal, Nitrile | 5310-021 |
| | 2 | Lip seal, FPM | 5310-052 |
| not listed | 2 | Housing screw | 5990034 |
| | 2 | Plug | 5470004 |

Hyclean Seal Kit

| | | |
|---|----------------------|-----------------|
| Δ | C/SS, Nitrile | 31497-7600-1051 |
| Δ | C/SS, FPM | 31497-7600-1052 |
| Δ | C/SS, EPDM | 31497-7600-1055 |
| Δ | C/SC, Nitrile | 31497-7600-1851 |
| Δ | C/SC, FPM | 31497-7600-1852 |
| Δ | C/SC, EPDM | 31497-7600-1855 |
| Δ | SC/SC, Nitrile | 31497-7600-2051 |
| Δ | SC/SC, FPM | 31497-7600-2052 |
| Δ | SC/SC - EPDM | 31497-7600-2055 |

Parts marked with Δ are included in the Hyclean seal kit.

Note! Two seal kits are required per pump.

Recommended Spare Parts: Pos. 7, 11, 16, 18, 20, 26, 31 and shaft seals