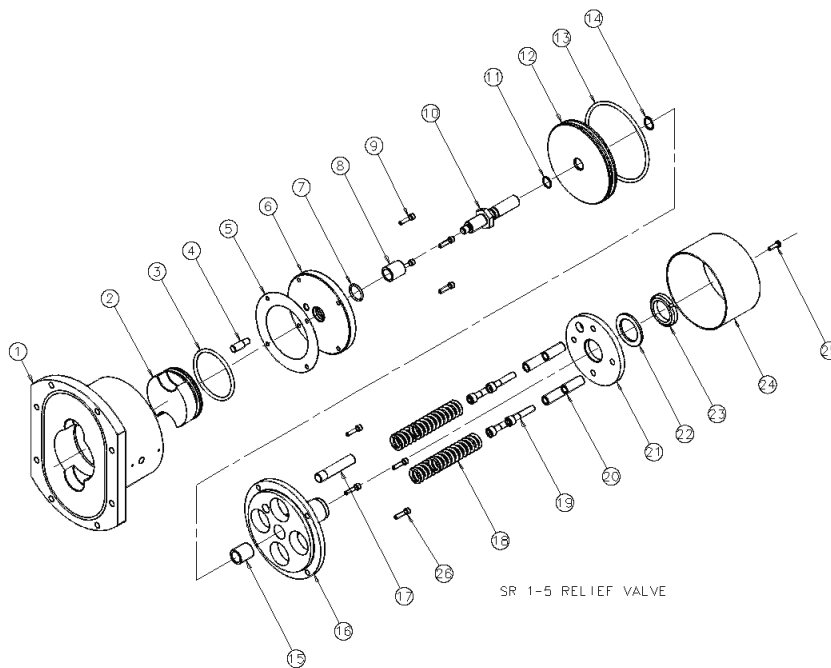


## Pressure Relief Valve (Parts)



Item	Description	Item	Description
1	Rotorcase cover	14	Circlip
2	Hydraulic piston	15	Bush
3	'O' ring, hydraulic piston	16	Valve guide
4	Valve pin	17	Valve pin
5	Shim	18	Spring
6	Backstop disc	19	Screw
7	'O' ring, backstop disc	20	Valve spring guide
8	Bush	21	Spring adjuster
9	Screw, backstop disc	22	Washer
10	Valve shaft	23	Notched nut
11	'O' ring, pneumatic piston	24	Valve housing
12	Pneumatic piston	25	Screw
13	'O' ring, pneumatic piston	26	Screw, spring adjuster

## SRU1-2 Pump Models

Only normal wearing component parts listed below – springs are compression type.

Dwg Item No.	Description	Qty	SRU1		SRU2		
			Part No.	Item No.	Part No.	Item No.	
13	'O' ring, piston	1	NBR	5380.030	5380-030	5380.030	5380-030
			EPDM	5380.410	5380-410	5380.410	5380-410
			FPM	5380.275	5380-275	5380.275	5380-275
			PTFE	5380.285	5380-285	5380.285	5380-285
	Shaft bush	1	5060.015	5060-015	5060.015	5060-015	
	'O' ring	1	5380.269	5380-269	5380.269	5380-269	
18	Spring	4	< 8 bar	6290.017	9630029781	-	-
			< 10 bar	-	-	6290.017	9630029781
			> 10 bar	-	-	6290.023	6290-023
	'O' ring, cover	1	NBR	5380.087	5380-087	1550.251	1550-251
			EPDM	5380.277	5380-277	1555.251	1555-251
			FPM	5380.163	5380-163	1551.251	9630026029
			PTFE	5380.164	5380-164	1552.251	1552-251

## Pressure Relief Valve (Parts)

### SRU3-6 Pump Models

Only normal wearing component parts listed below – springs are compression type except SRU6 which are disc type.

Dwg Item No.	Description	Qty	SRU3		SRU4		
			Part No.	Item No.	Part No.	Item No.	
13	'O' ring, piston	NBR EPDM FPM PTFE	1	5380.030	5380-030	5380.028	5380-028
				5380.410	5380-410	5380.411	5380-411
				5380.275	5380-275	5380.035	5380-035
				5380.285	5380-285	5380.303	5380-303
	Shaft bush		1	5060.015	5060-015	5060.016	9630047647
	'O' ring	NBR	1	5380.269	5380-269	5380.291	5380-291
18	Spring	< 10 bar > 10 bar	4	6290.017	9630029781	6290.021	6290-021
				6290.023	6290-023	6290.024	6290-024
	'O' ring, cover	NBR EPDM FPM PTFE	1	1550.260	1550-260	1550.267	1550-267
				1555.260	1555-260	1555.267	1555-267
				1551.260	1551-260	1551.267	1551-267
				1552.260	1552-260	1552.267	1552-267

Dwg Item No.	Description	Qty	SRU5		SRU6		
			Part No.	Item No.	Part No.	Item No.	
13	'O' ring, piston	NBR EPDM FPM PTFE	1	5380.028	5380-028	5380.288	5380-288
				5380.411	5380-411	5380.412	9630043111
				5380.035	5380-035	5380.301	5380-301
				5380.303	5380-303	5380.302	5380-302
	Shaft bush		1	5060.016	9630047647	5060.011	5060-011
	'O' ring	NBR	1	5380.291	5380-291	5380.291	5380-291
18	Spring (SRU5 only)	< 10 bar > 10 bar	4	6290.021	6290-021	-	-
				6290.024	6290-024	-	-
18	Spring (SRU6 only)	> 7 bar > 10 bar > 15 bar > 18 bar	144 192 216 240	-	-	6280.002	6280-002
				-	-	6280.002	6280-002
				-	-	6280.002	6280-002
				-	-	6280.002	6280-002
	'O' ring, cover	NBR EPDM FPM PTFE	1	1550.274	1550-274	5380.210	5380-210
				1555.274	1555-274	5380.278	5380-278
				1551.274	1551-274	5380.276	5380-276
				1552.274	1552-274	5380.266	5380-266

### SRU6 Relief Valve Spring Arrangements:

<p><b>Up to 7 Bar</b> Springs arranged: (())(()) 1 stack = () 2 springs 18 stacks per set 4 sets in each valve. Total 144 springs.</p>	<p><b>Up to 10 Bar</b> Springs arranged: (())(())(())(()) 1 stack = (()) 4 springs 12 stacks per set 4 sets in each valve. Total 192 springs.</p>
<p><b>Up to 15 Bar</b> Springs arranged: (((()))(())(())(()) 1 stack = (((())) 6 springs 9 stacks per set 4 sets in each valve. Total 216 springs.</p>	<p><b>Up to 10 Bar</b> Springs arranged: (((()))(())(())(()) 1 stack = (((())) 6 springs 10 stacks per set 4 sets in each valve. Total 240 springs.</p>

## Pressure Relief Valve (Complete)

Complete assembly includes rotorcase cover. N = NBR, E = EPDM, V = FPM and P = PTFE for elastomers required.

Valve type	SRU1		SRU2		SRU3	
	Part No.	Item No.	Part No.	Item No.	Part No.	Item No.
Standard pressure	4083.001N	4083-001N	4083.002N	4083-002N	4083.003N	4083-003N
	4083.001E	9630047160	4083.002E	9630027296	4083.003E	9630043291
	4083.001V	4083-001V	4083.002V	4083-002V	4083.003V	9630033119
	4083.001P	4083-001P	4083.002P	4083-002P	4083.003P	9630034567
High pressure	4083.001N/HP	9630045539	4083.002N/HP	9630024964	4083.003N/HP	9630048177
	4083.001E/HP	4083-001E/HP	4083.002E/HP	9630024957	4083.003E/HP	88341934
	4083.001V/HP	9630037687	4083.002V/HP	4083-002V/HP	4083.003V/HP	9630045609
	4083.001P/HP	9630047617	4083.002P/HP	9630024959	4083.003P/HP	9630048178
Standard pressure with lever lift	4083.101N	9630044546	4083.102N	9630045082	4083.103N	9630046971
	4083.101E	9630091243	4083.102E	9630046972	4083.103E	9630046973
	4083.101V	9630091244	4083.102V	9630059453	4083.103V	9630026838
	4083.101P	9630091245	4083.102P	9630091250	4083.103P	9630091255
High pressure with lever lift	4083.101N/HP	9630091246	4083.102N/HP	9630091251	4083.103N/HP	9630091256
	4083.101E/HP	9630091247	4083.102E/HP	9630091252	4083.103E/HP	9630091257
	4083.101V/HP	9630091248	4083.102V/HP	9630091253	4083.103V/HP	9630091258
	4083.101P/HP	9630091249	4083.102P/HP	9630091254	4083.103P/HP	9630091259

Valve type	SRU4		SRU5	
	Part No.	Item No.	Part No.	Item No.
Standard pressure	4083.004N	4083-004N	4083.005N	4083-005N
	4083.004E	9630039307	4083.005E	4083-005E
	4083.004V	9630033120	4083.005V	4083-005V
	4083.004P	9630034189	4083.005P	9630045590
High pressure	4083.004N/HP	9630033094	4083.005N/HP	9630047693
	4083.004E/HP	9630031450	4083.005E/HP	9630047692
	4083.004V/HP	9630037120	4083.005V/HP	9630029103
	4083.004P/HP	9630030615	4083.005P/HP	9630045543
Standard pressure with lever lift	4083.104N	9630091260	4083.105N	9630091265
	4083.104E	9630046974	4083.105E	9630091266
	4083.104V	9630075494	4083.105V	9630047273
	4083.104P	9630042755	4083.105P	9630042284
High pressure with lever lift	4083.104N/HP	9630091261	4083.105N/HP	9630091267
	4083.104E/HP	9630091262	4083.105E/HP	9630091268
	4083.104V/HP	9630091263	4083.105V/HP	9630091269
	4083.104P/HP	9630091264	4083.105P/HP	9630091270

Valve type	SRU6 standard		SRU6 with lever lift	
	Part No.	Item No.	Part No.	Item No.
Up to 7 bar	4083.006N	4083-006N	4083.106N	9630091272
	4083.006E	4083-006E	4083.106E	9630055893
	4083.006V	9630033133	4083.106V	9630054329
	4083.006P	4083-006P	4083.106P	9630042271
Up to 10 Bar	4083.006N/ME	9630045542	4083.106N/ME	9630091273
	4083.006E/ME	4083-006E/ME	4083.106E/ME	9630091274
	4083.006V/ME	9630046886	4083.106V/ME	9630091275
	4083.006P/ME	9630022269	4083.106P/ME	9630091276
Up to 15 Bar	4083.006N/HP	9630038272	4083.106N/HP	9630091277
	4083.006E/HP	9630058067	4083.106E/HP	9630091278
	4083.006V/HP	9630045807	4083.106V/HP	9630091279
	4083.006P/HP	9630048700	4083.106P/HP	9630091280
Up to 18 Bar	4083.006N/HP1	4083-006N/HP1	94083.106N/HP1	9630091281
	4083.006E/HP1	9630062101	4083.106E/HP1	9630091282
	4083.006V/HP1	9630036122	4083.106V/HP1	9630091283
	4083.006P/HP1	9630091271	4083.106P/HP1	9630091284