

When you need a High Quality Opening

Access Tank Cover - Circular Types LKDS and LKDC

Application

The circular LKDC and LKDS stainless steel manhole cover is used on tanks or containers where a closeable mean of access to the interior of the vessel, situated above the liquid level, is required.

Working principle

The LKDC cover is supplied with a replaceable, self-sealing double lip seal (see fig. 2.) to prevent fluids from spraying out, e.g. during CIP cleaning and similar processes or during travel on mobile tanks or road tankers.

The LKDS cover is not designed to fit watertight to the tank and therefore it is supplied with a splash guard to prevent liquid spraying out during a cleaning process.

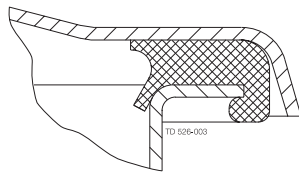


Fig. 2. Double lip seal.



LKDC and LKDS Manhole Covers.

Technical data

LKDC	
Steel parts	1.4301 (AISI 304) or 1.4404 (AISI 316L)
	Cover and frame are supplied with inspection certificate
	3.1B acc. to EN 10204 (not delivered for LKDC size 614)
Plastic parts	Nylon
Seal	Nitrile (NBR)
Finish	Semi-bright
Working pressure	No pressure
Max. temperature	+ 194° F (NBR) + 284° F (EPDM, not for oil and fat) + 284° F (FPM flourinated rubber)
Min. temperature	- 4° F

LKDS	
Steel parts	1.4301 (AISI 304) or 1.4404 (AISI 316L)
Plastic parts	
Seal	
Finish	Semi-bright
Working pressure	No pressure
Max. temperature	
Min. temperature	

Options LKDC

- A. Swiveling hinge for the clamp arm is available, allowing the cover to be moved laterally.
- B. Safety grid for LKDC.
- C. Seal of EPDM rubber.
- D. Seal of flourinated rubber (FPM).

Ordering

Please state the following when ordering:

- Materials, steel and rubber.
- Diameter of holes.
- Height of frame.

Dimensions LKDC

Size/ID	mm	inch	mm	inch	mm	inch	mm	inch	mm	inch	mm	inch	mm	inch	mm	inch
OD	204	8.03	304	11.97	436	17.17	436	17.17	506	19.92	506	19.92	620	24.41	620	24.41
C	326	12.83	426	16.77	556	21.89	556	21.89	626	24.65	626	24.65	740	29.13	740	29.13
E	152	5.98	221	8.7	205	8.07	305	12.01	205	8.07	305	12.01	210	8.27	310	12.2
F	86	3.39	150	5.91	100	3.94	200	7.87	100	3.94	200	7.87	100	3.94	200	7.87
G	45	1.77	110	4.33	60	2.36	160	6.3	60	2.36	160	6.3	60	2.36	160	6.3
H	40	1.57	105	4.13	55	2.17	155	6.1	55	2.17	155	6.1	55	2.17	155	6.1
t	2	0.08	2	0.08	3	0.12	3	0.12	3	0.12	3	0.12	3	0.12	3	0.12
SL	2	0.08	2	0.08	2	0.08	2	0.08	2	0.08	2	0.08	3	0.12	3	0.12
Weight (kg)/(lb)	3.6	7.9	6.3	13.9	9.0	19.8	10.5	23.1	12.0	26.5	14.0	30.9	14.4	31.7	16.8	37.0

Frame height	mm	inch	mm	inch
	20	0.79	100	3.94
A	454	17.87	454	17.87
C	272	10.71	272	10.71
t	3	0.12	3	0.12
Weight (kg)/(lb)	5	11.1	6	13.2

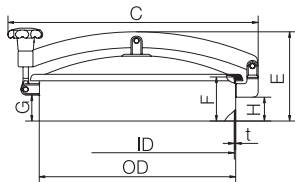


Fig. 3. Dimensions LKDC.

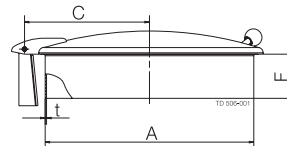


Fig. 4. Dimensions LKDS.